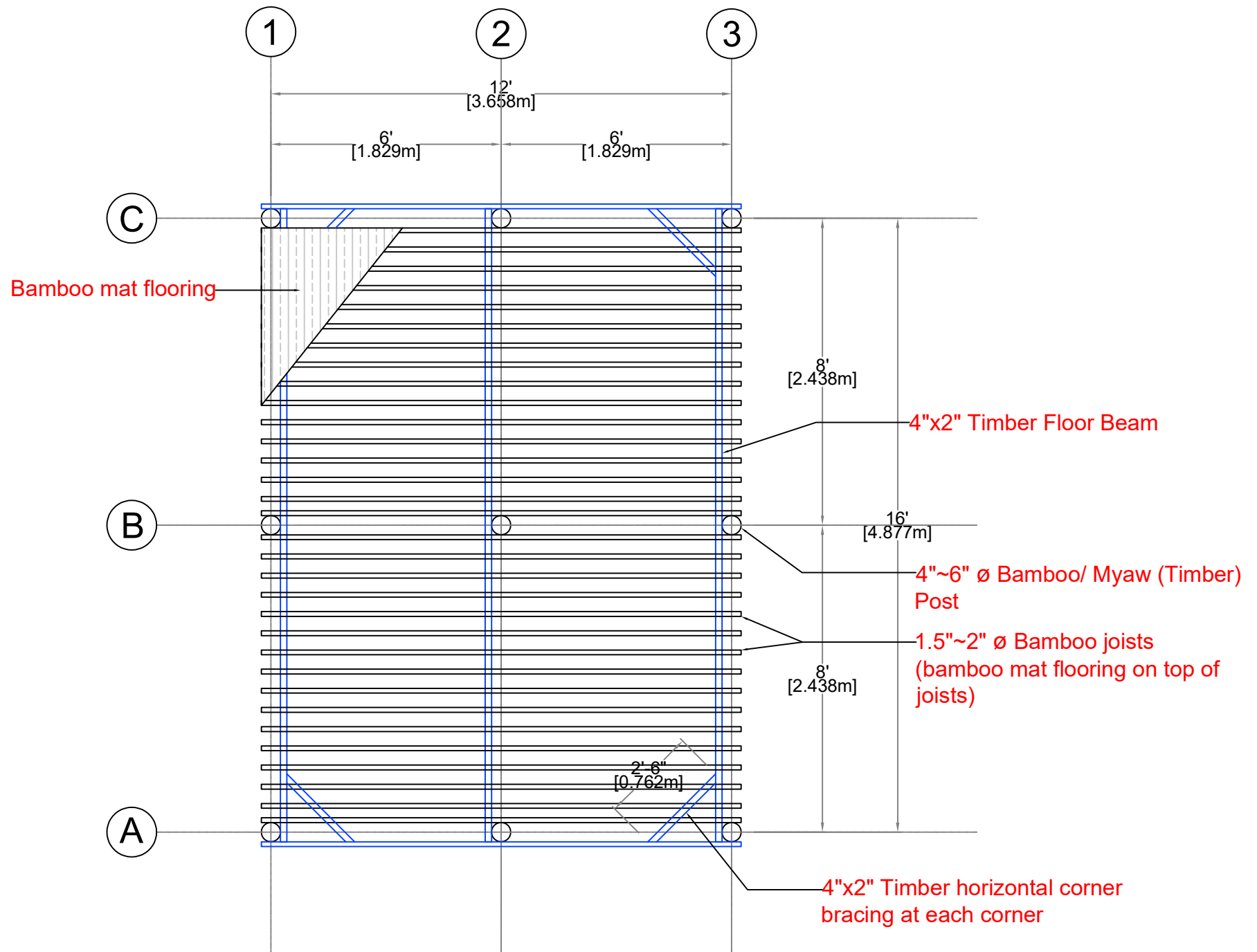
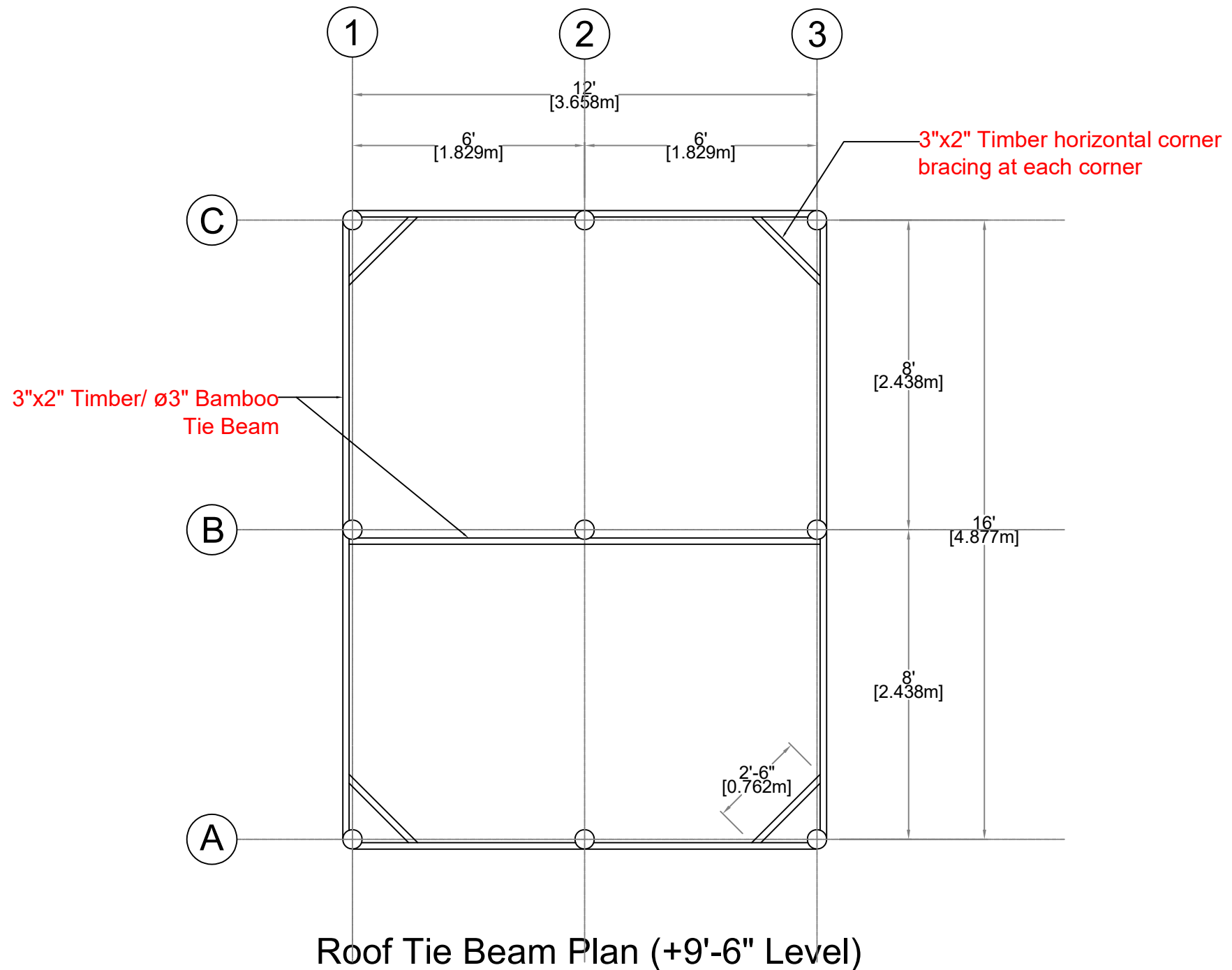


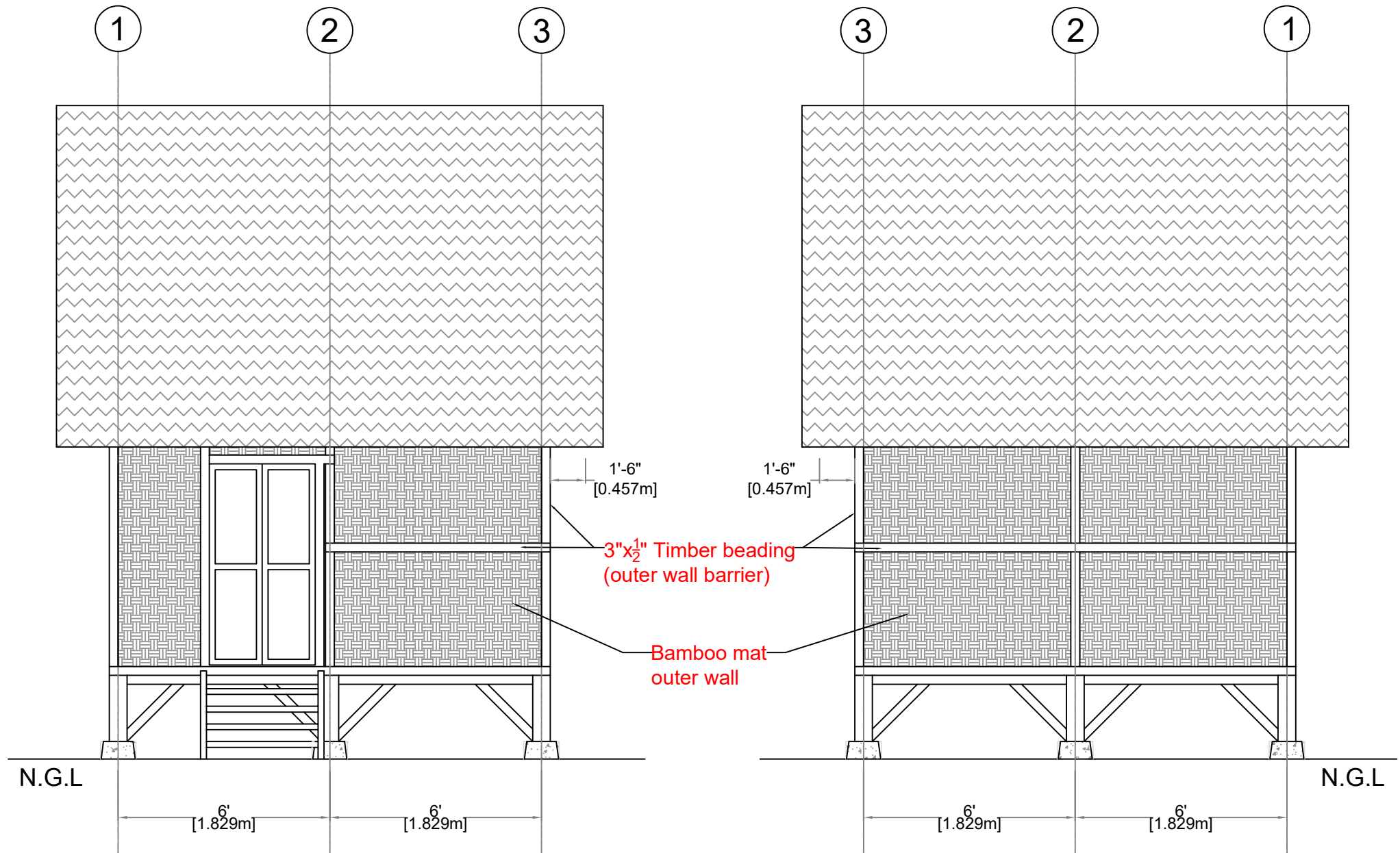
Floor Plan view



Floor Beam Plan (+2'-6" Level)



Nipa Palm Leaf Roofing

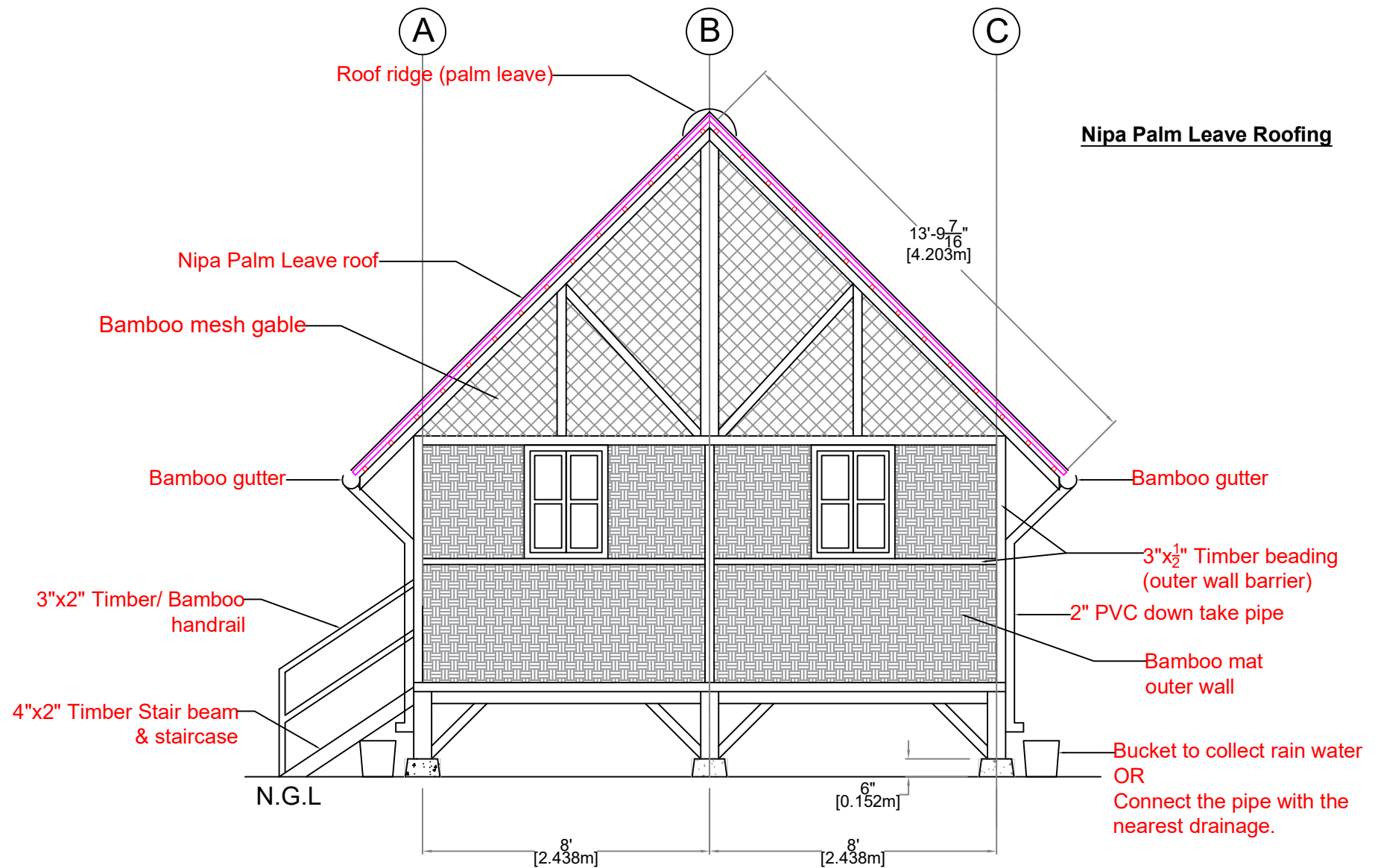


Front view

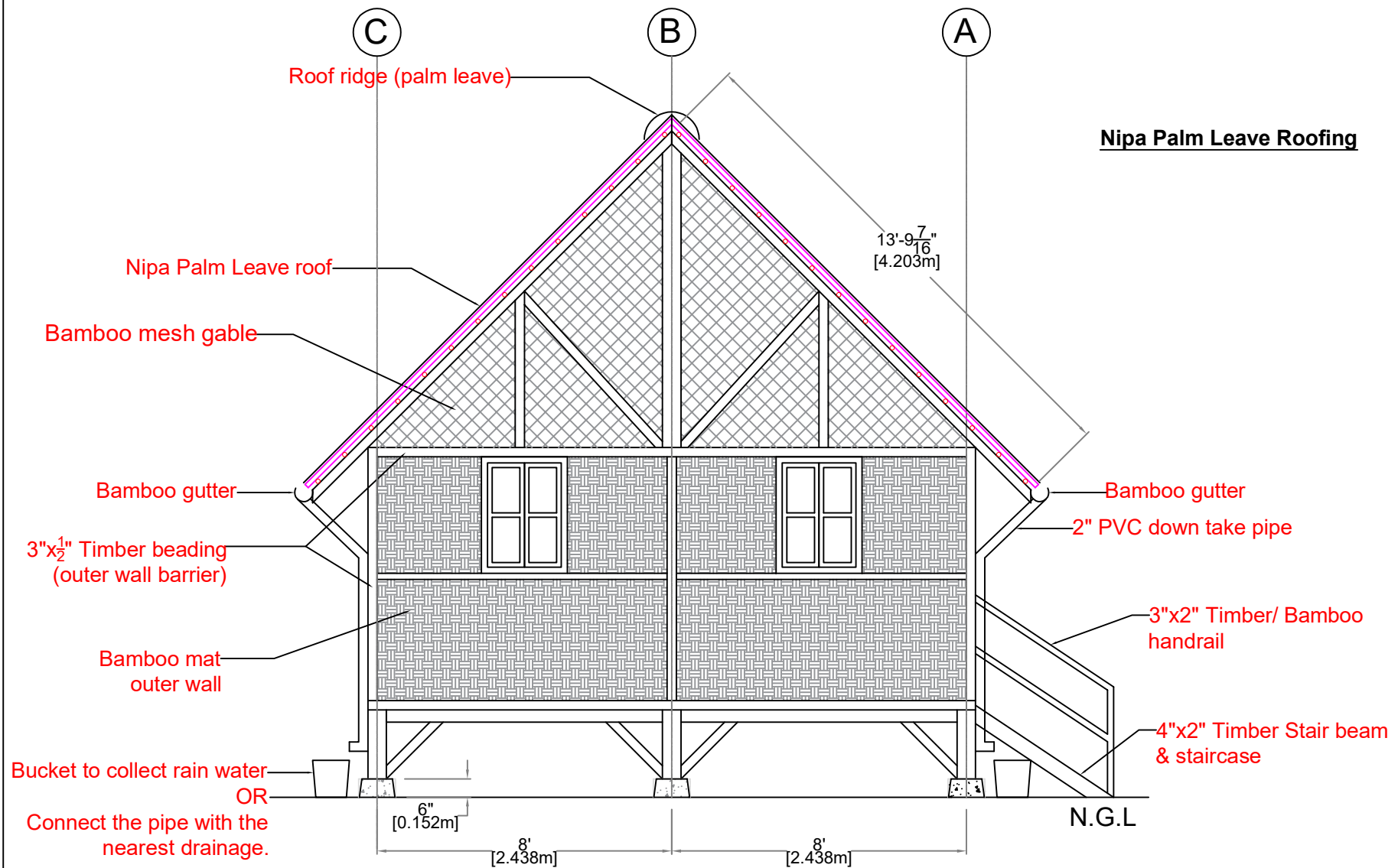
Back view

St-andré cross shall be separated from the horizontal and vertical structure (struts). It is built after the main structure.



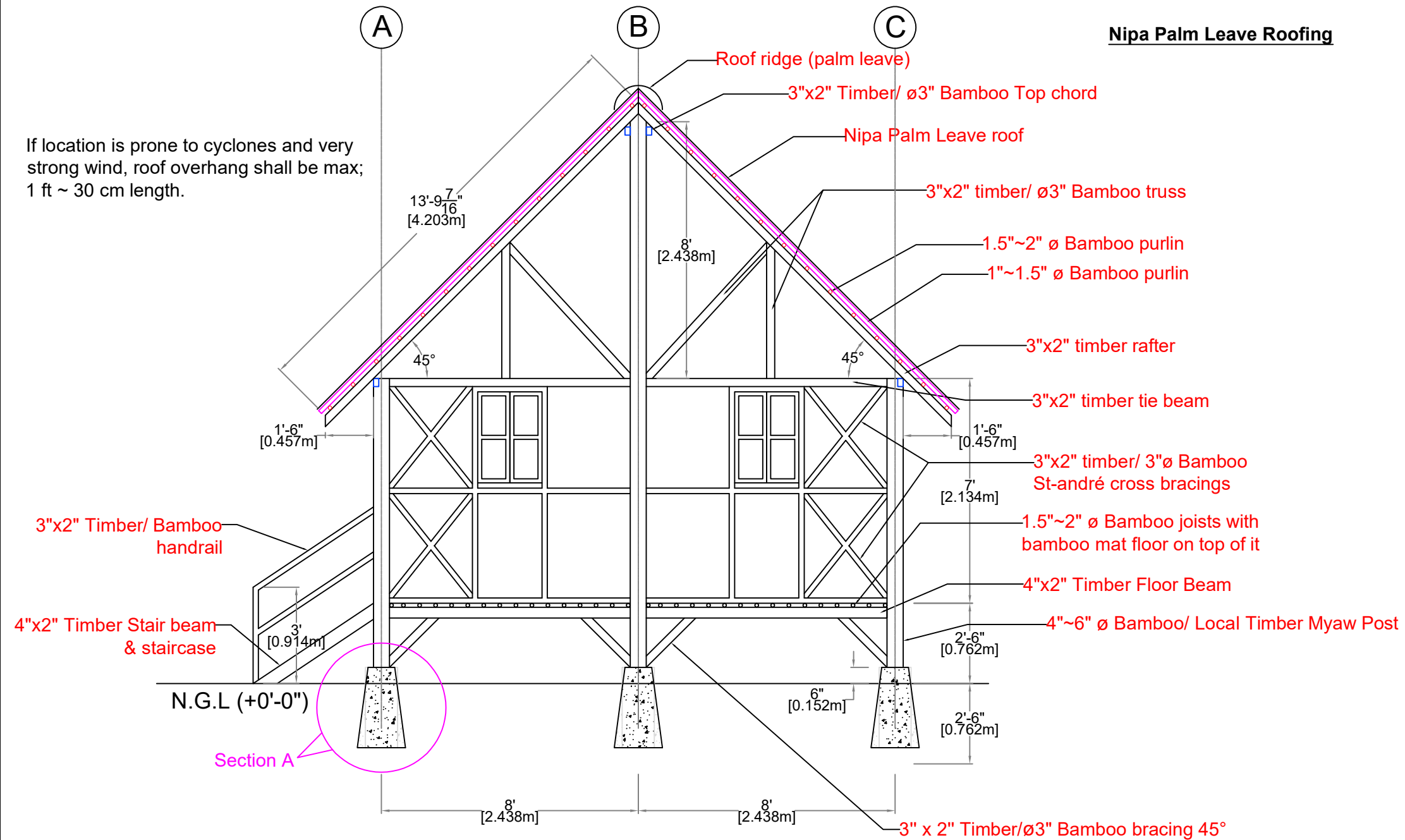


Right side view



Nipa Palm Leaf Roofing

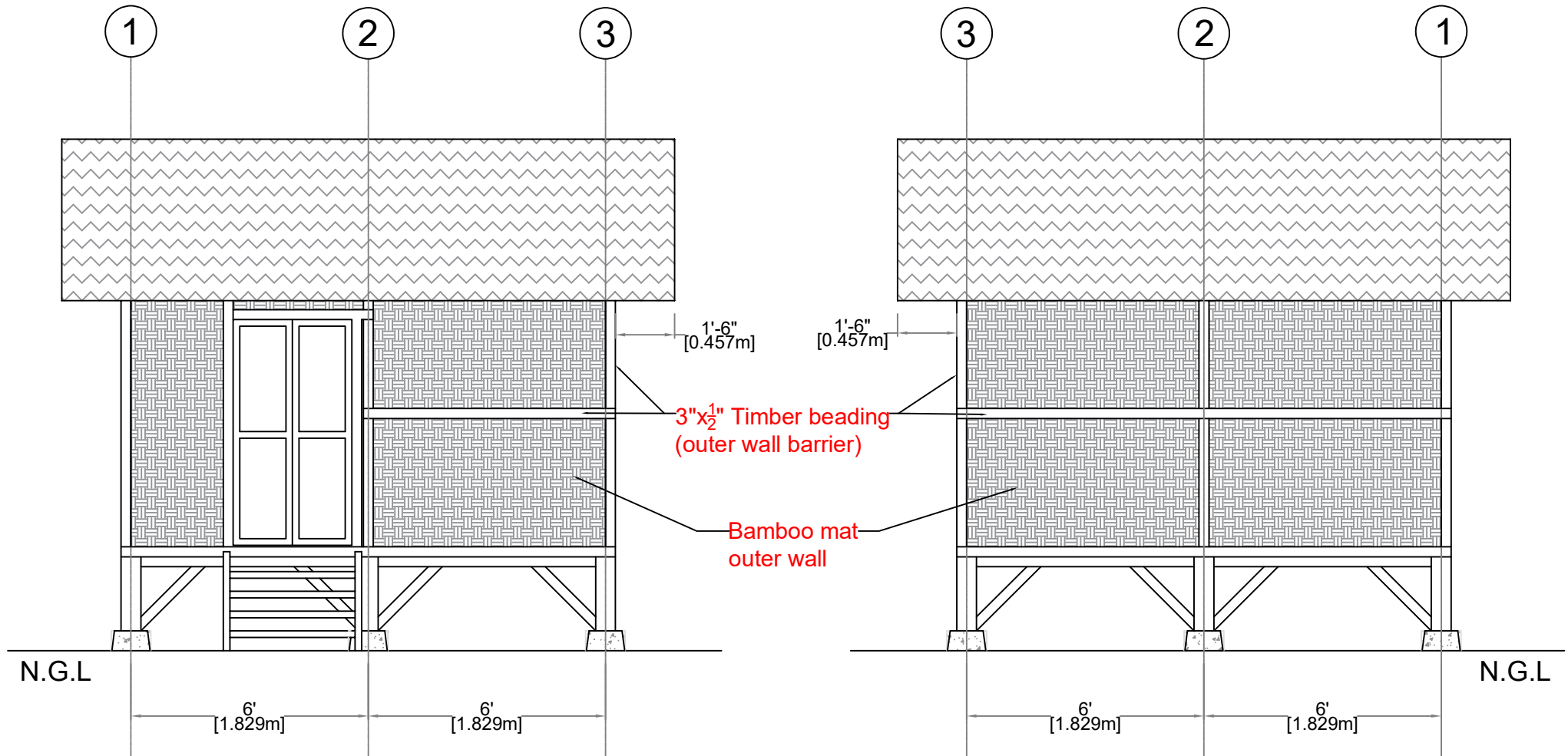
If location is prone to cyclones and very strong wind, roof overhang shall be max; 1 ft ~ 30 cm length.



Door and window frames must be 3"x2" timber while other struts and bracing can be 3" ø bamboo.

Section view

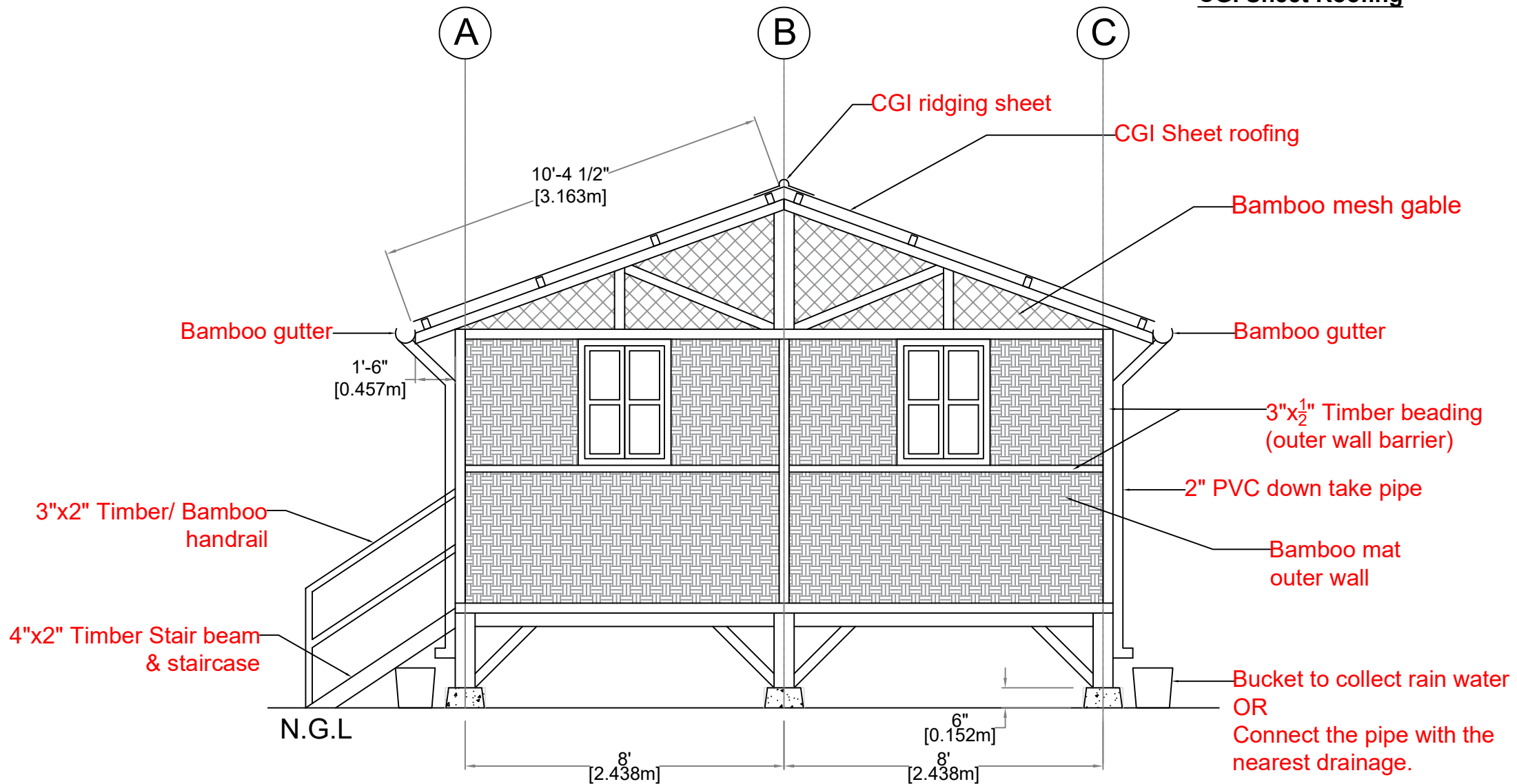
CGI Sheet Roofing



Front view

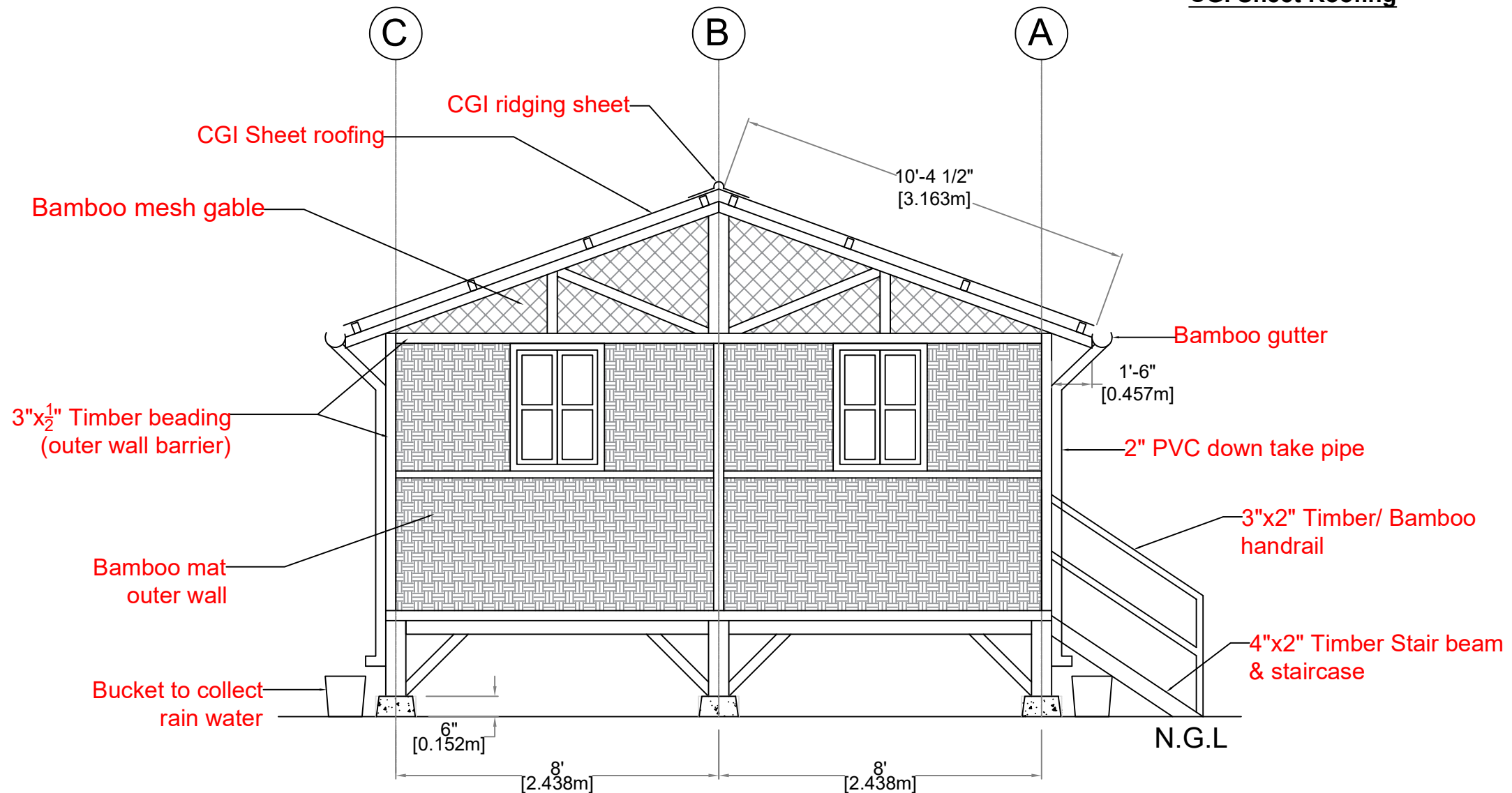
Back view

CGI Sheet Roofing



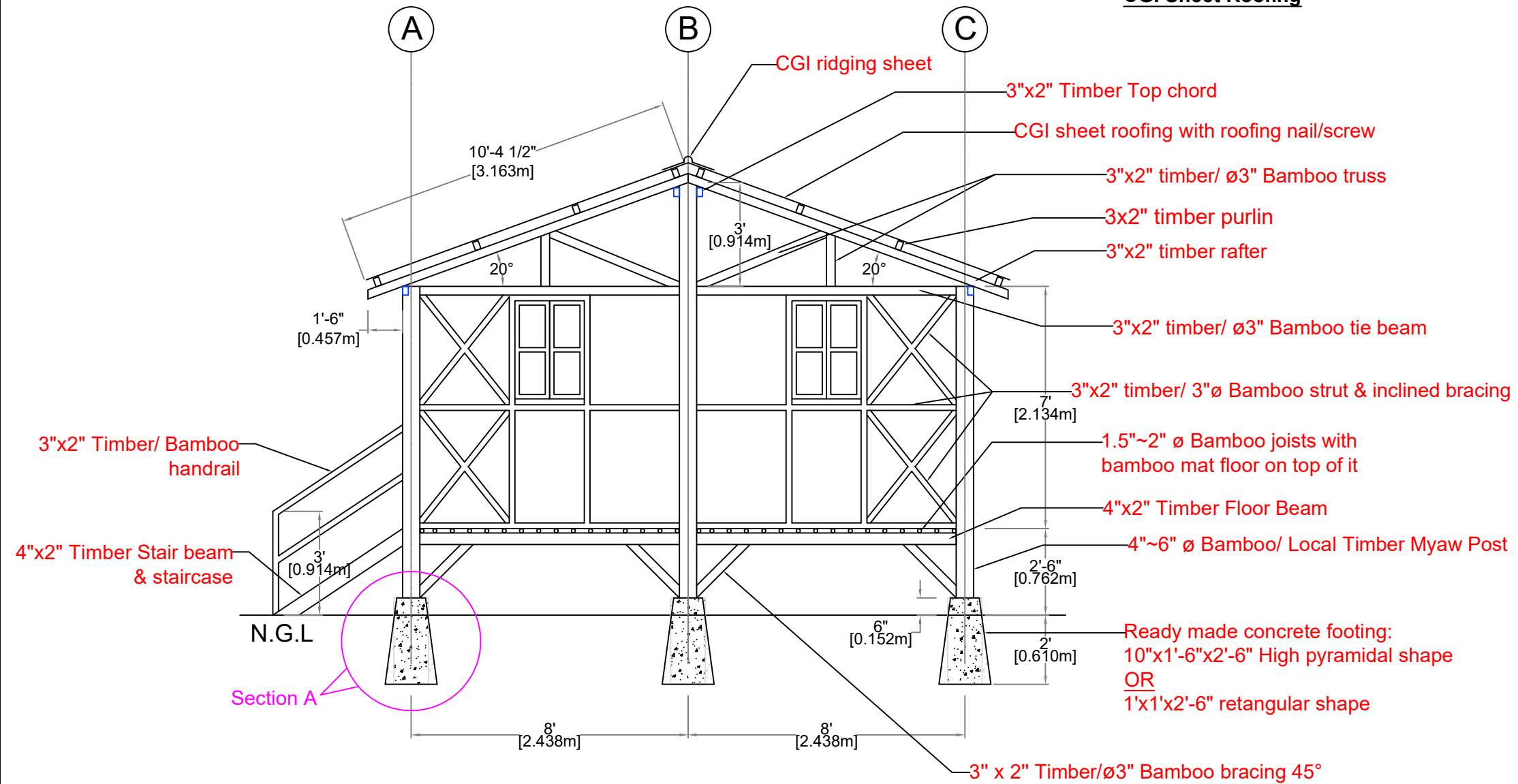
Right side view

CGI Sheet Roofing



Left side view

CGI Sheet Roofing



Door and window frames must be 3"x2" timber while other struts and bracing can be 3" ø bamboo.

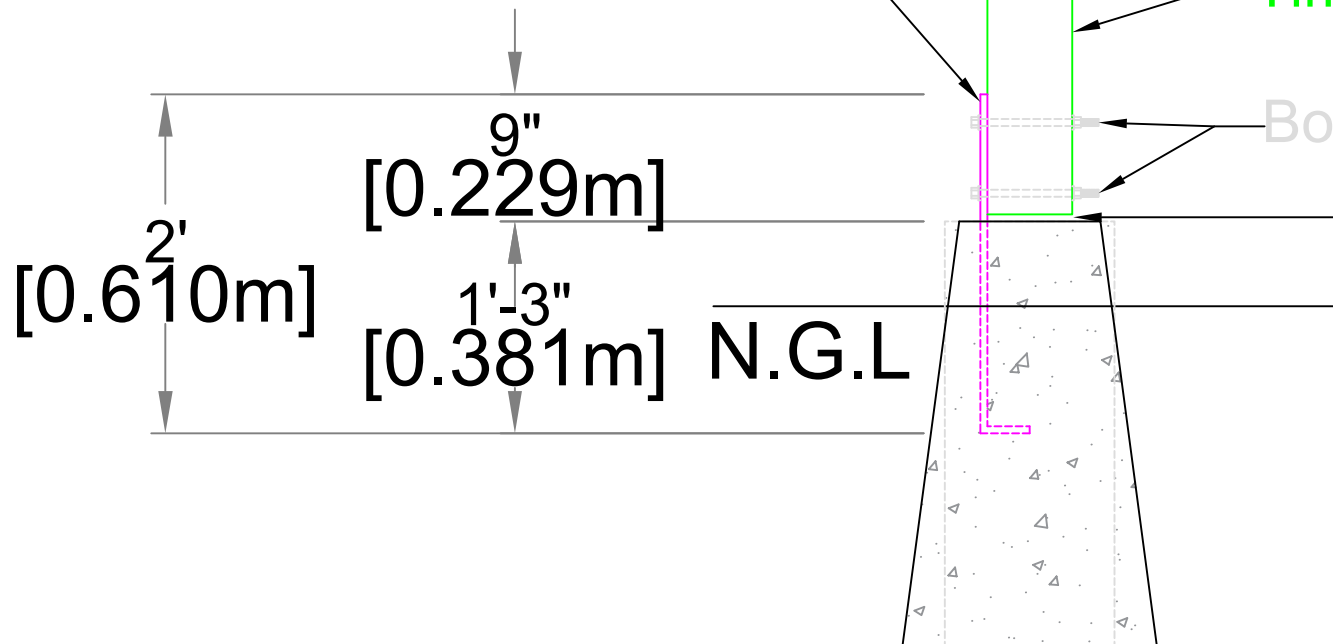
Section view

M.S post trap (2"x1/4"x2'Long)

Timber or Bamboo post

Bolts & nuts (9" long) with washers

Min; space (12mm ~ $\frac{1}{2}$ ") is provided between post and footing surface



Section A

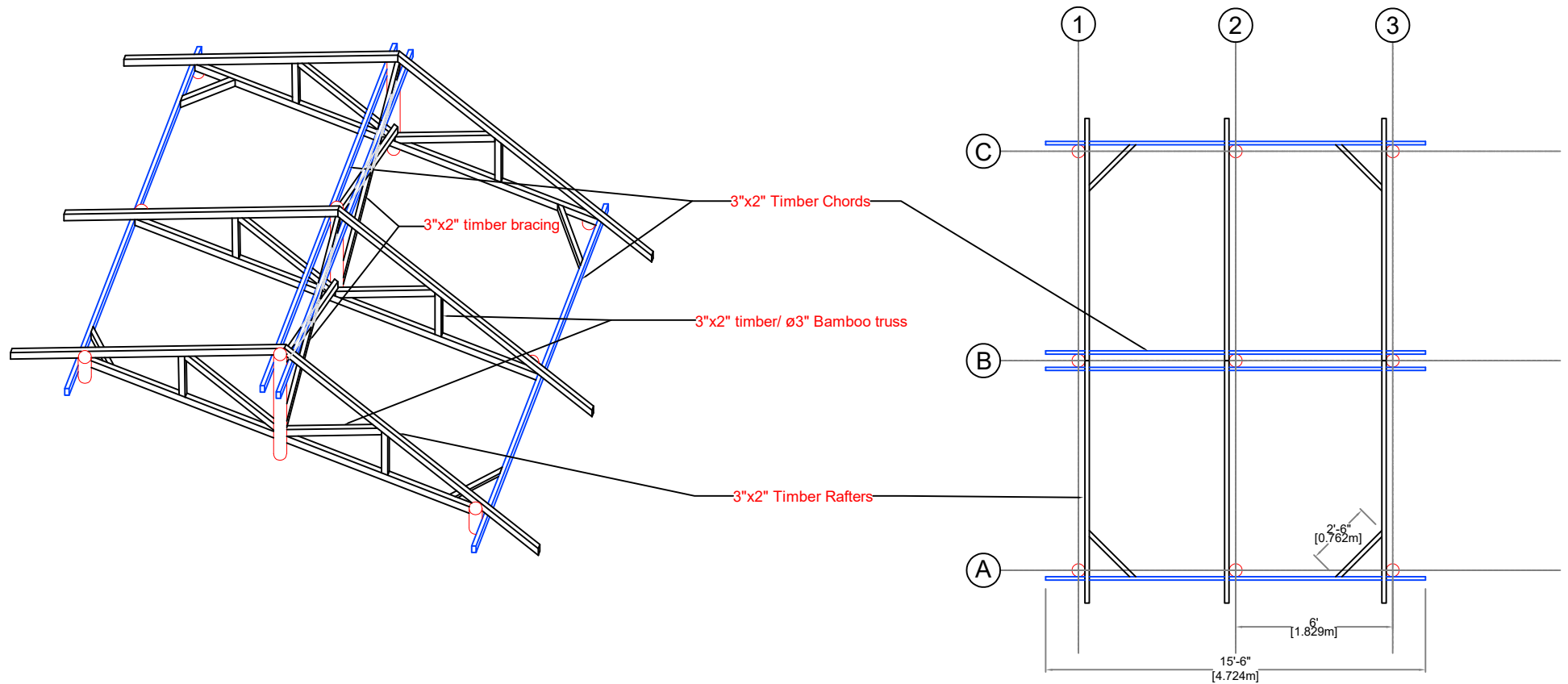


MYANMAR
SHELTER CLUSTER
Coordinating Humanitarian Shelter and Settlements



CCCM CLUSTER
Myanmar

Use cyclone straps for every connection between posts, beams, chords, rafters.
Ensure proper connection with straps from foundation to roof elements.



Rafter & Truss plan
(Nipa Palm Leaf Roof)

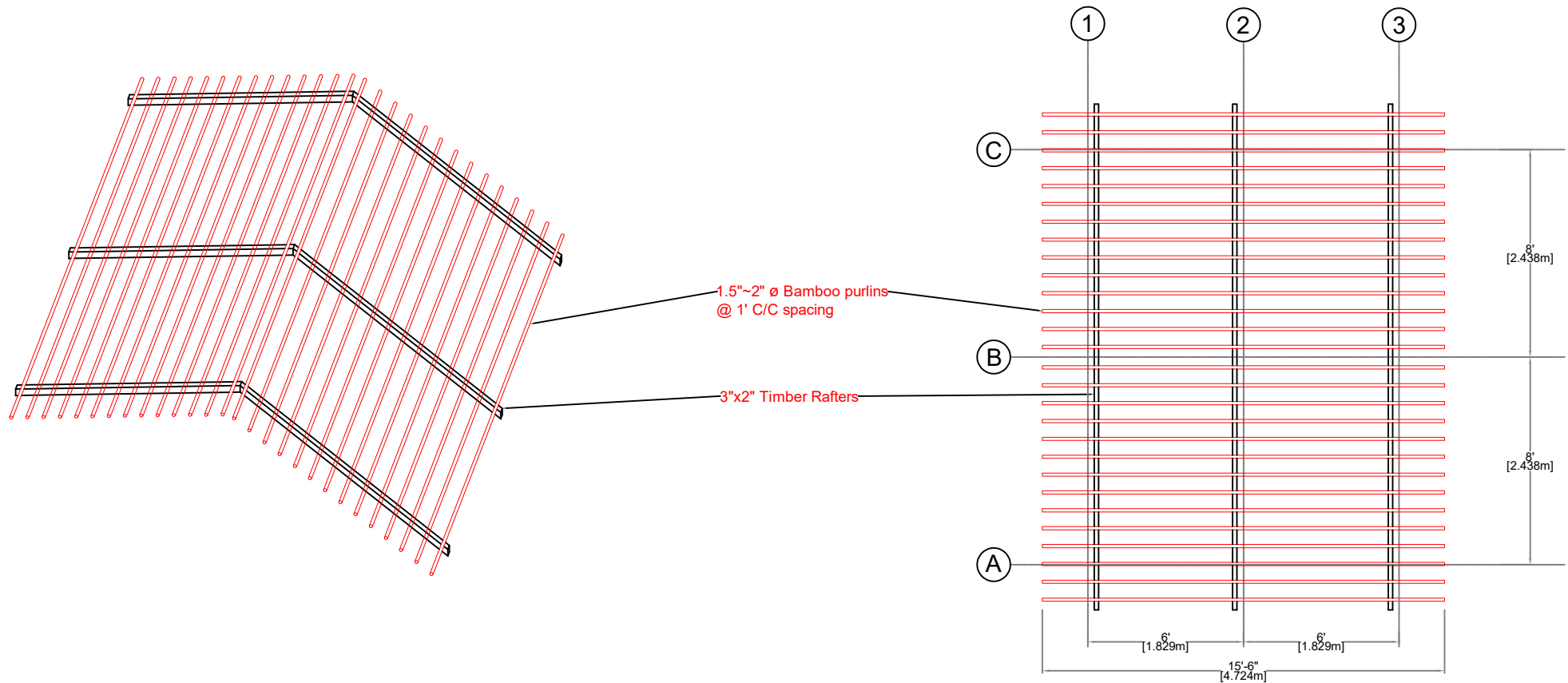


**MYANMAR
SHELTER CLUSTER**

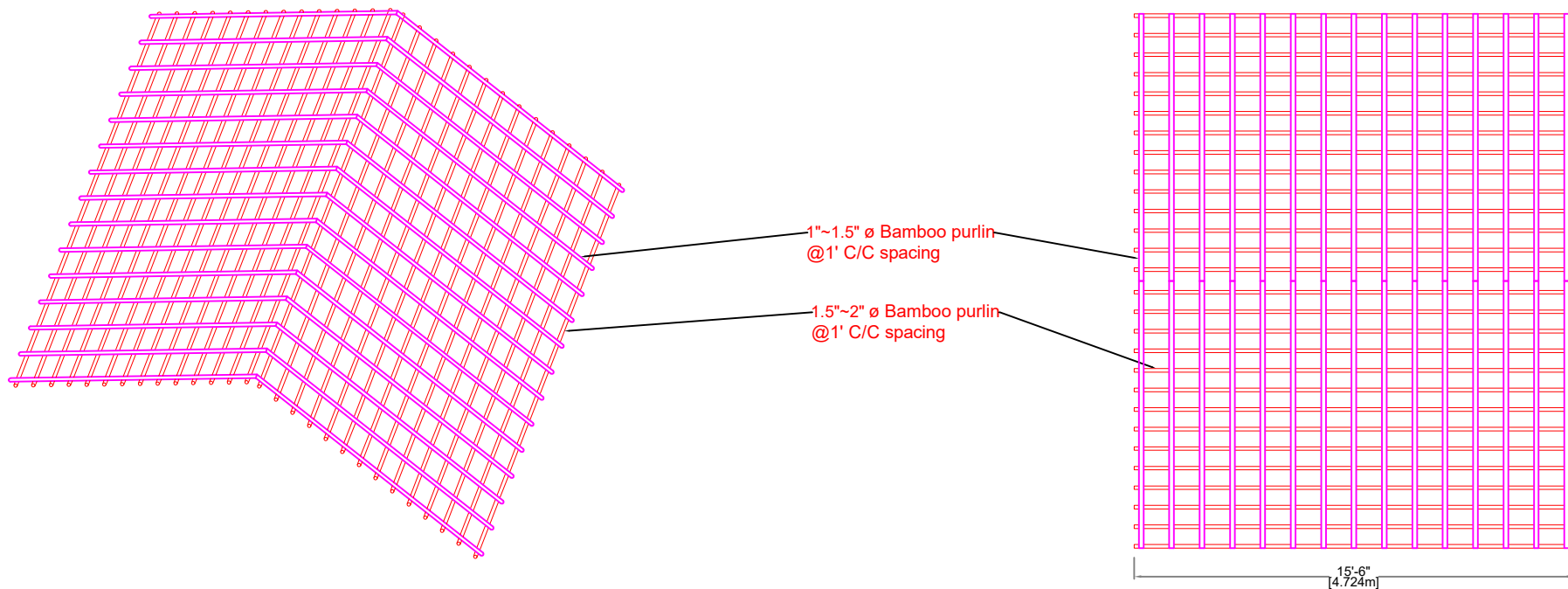
Coordinating Humanitarian Shelter and Settlements



Use cyclone straps for every connection between posts, beams, chords, rafters. Ensure proper connection with straps from foundation to roof elements.



Rafter & Purlin plan (Nipa Plam leave Roof)



Purlins plan
(Nipa Palm Leaf roof)

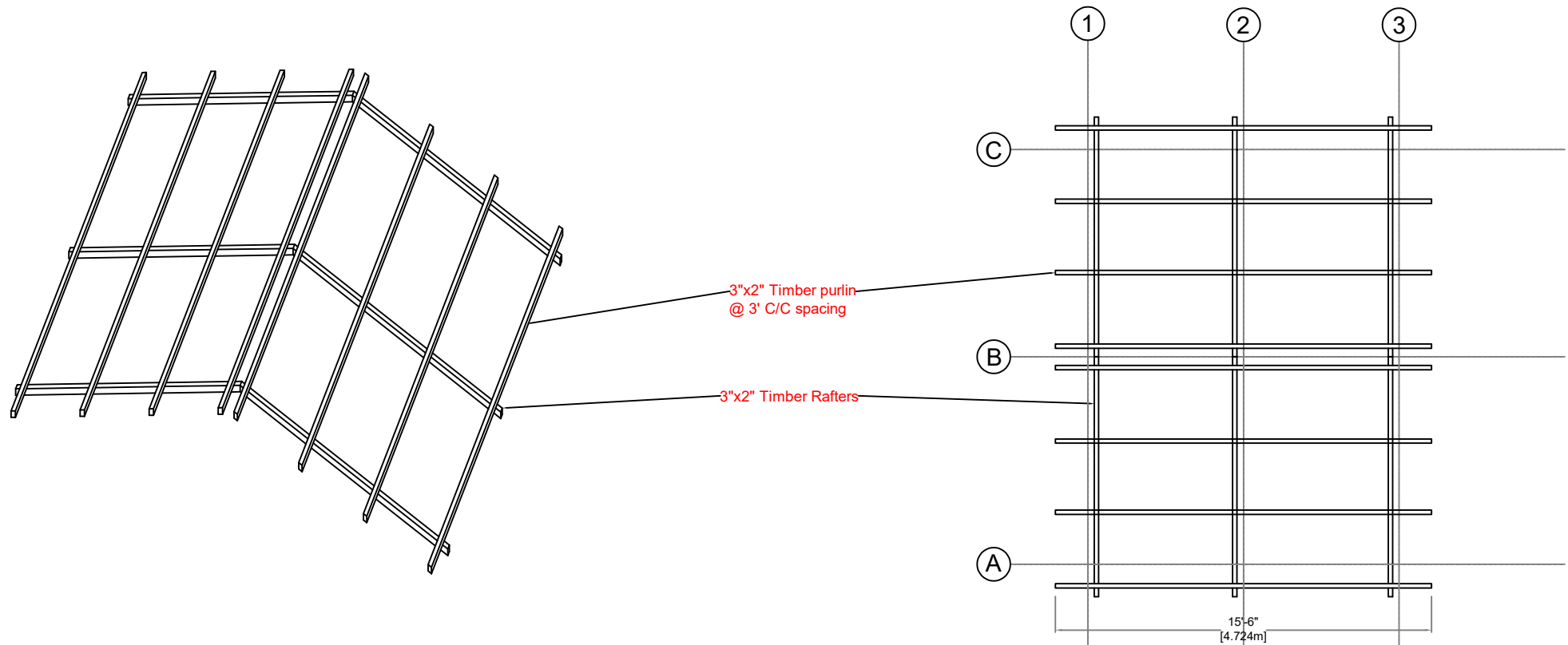


**MYANMAR
SHELTER CLUSTER**

Coordinating Humanitarian Shelter and Settlements



Use cyclone straps for every connection between posts, beams, chords, rafters.
Ensure proper connection with straps from foundation to roof elements.



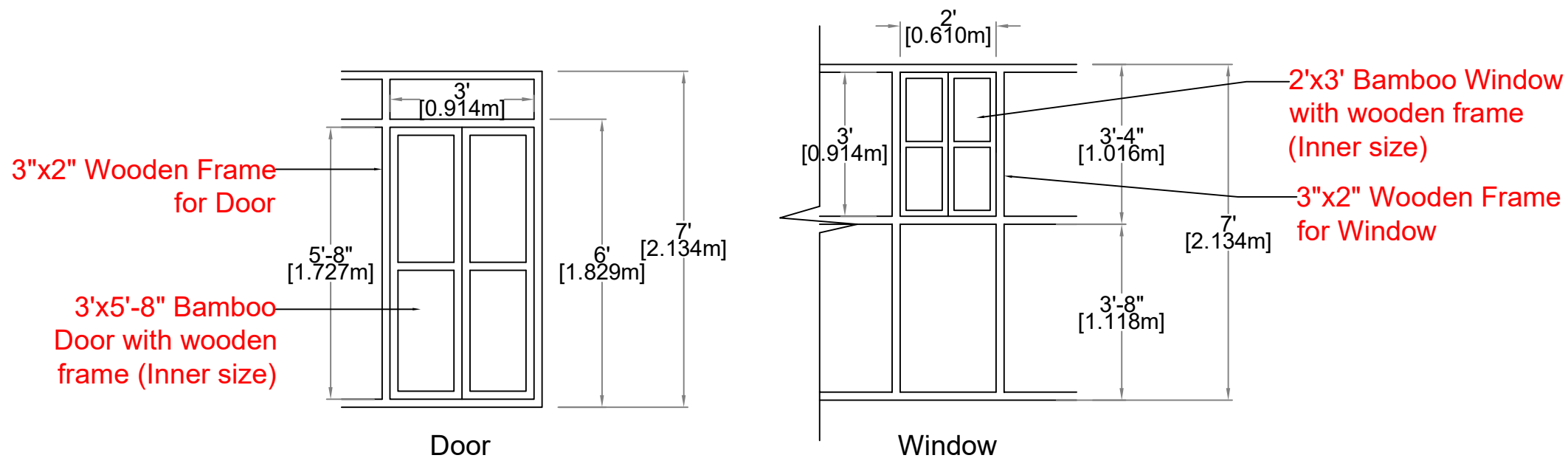
Rafter & Purlin plan
(CGI Roof)



**MYANMAR
SHELTER CLUSTER**

Coordinating Humanitarian Shelter and Settlements





Door & Window Details



**MYANMAR
SHELTER CLUSTER**
Coordinating Humanitarian Shelter and Settlements

